

# 2024 company overview

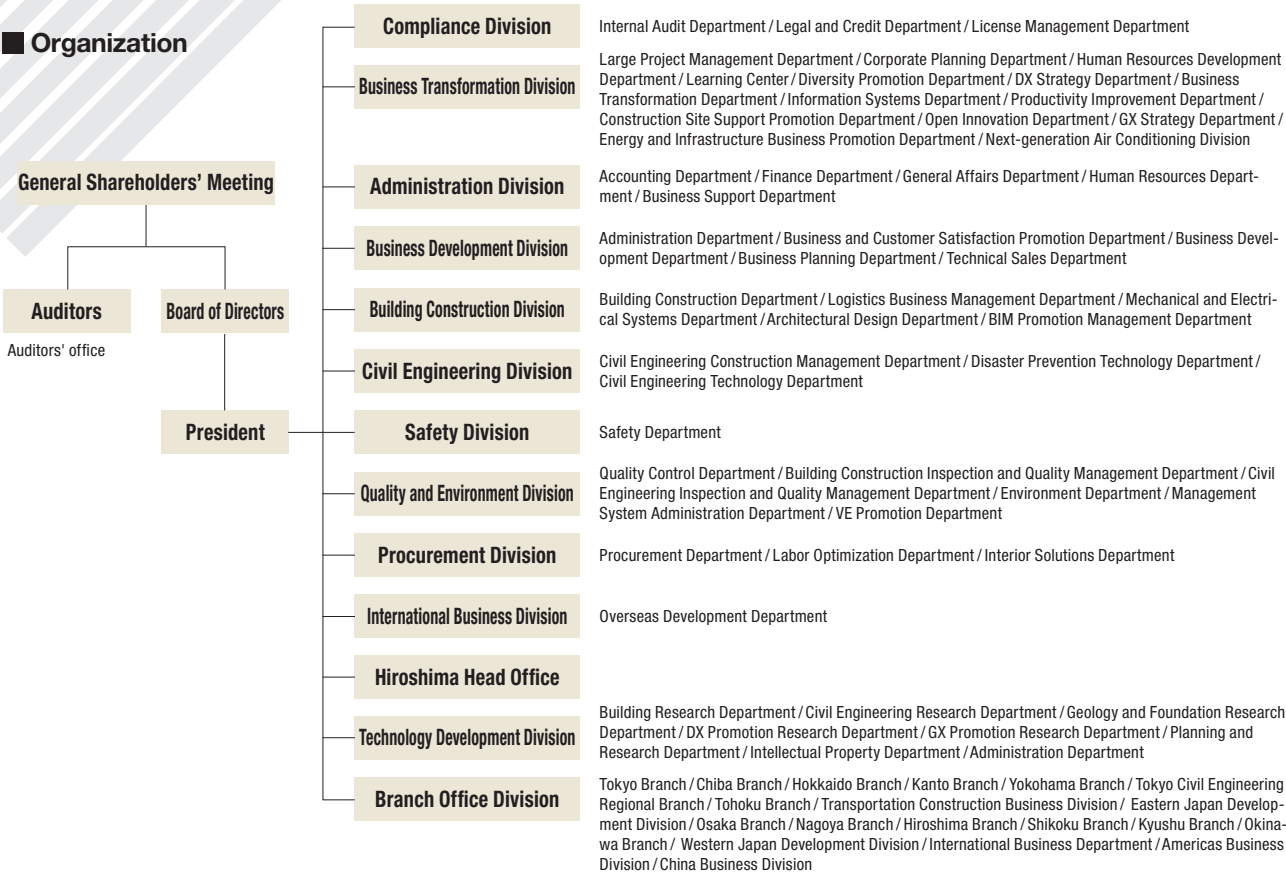
## Overview

Company name	Fujita Corporation		
Headquarters address	4-25-2 Sendagaya, Shibuya-ku Tokyo, 151-8570 Japan (Headquarters address on commercial registry: 4-32-22 Nishi-Shinjuku, Shinjuku-ku, Tokyo)		
Representative	President and CEO Yoji Okumura		
Established	December 1, 1910		
Incorporated	October 1, 2002		
Contractor's license	Ministry of Land, Infrastructure, Transport and Tourism (Special-4) No.19796		
Building lots and buildings transaction business license	Ministry of Land, Infrastructure, Transport and Tourism License (5) No. 6348		
Capital	14 billion yen		
Number of employees	3,398 (As of April 1, 2024)		
Number of licensed employees	Doctorates in engineering, science, and other fields: 35      Professional engineers: 208 Registered architects, first class: 662      Registered supervising engineers of construction work, first class: 1,032 Registered supervising engineers of civil engineering work, first class: 753      Registered real-estate brokers (certified): 621		
Business details (Articles of Incorporation)	1. Contracting, planning, design, supervision, and consulting services for construction projects		
	2. Research, planning, design, management, and consulting services related to space development, marine development, community development, urban development, resource development, and environmental improvement		
	3. Real estate appraisals and business operations related to real estate buying, selling, trading, leasing, and management as well as agent and mediation services		
	4. Type II nancial instruments business based on the Financial Instruments and Exchange Act, investment advice and agent services, and investment management services		
	5. Business operations based on the Real Estate Specified Joint Enterprise Act		
	6. Business operations related to the development and subdivision of residential property and the construction and sale of homes		
	7. Business operations related to soil contamination studies, removal, and similar operations		
	8. Business operations related to the maintenance and management of buildings, structures, and their equipment		
	9. Ownership, management, and consulting services related to accommodation facilities, sports facilities, recreational facilities, health and medical facilities, educational facilities, and restaurants, as well as a travel agency business		
	10. Business related to power generation and electricity supply by using wind power, solar power, geothermal power, hydropower, etc.		
	11. Project development, acquisition, rentals, and sales related to industrial property rights, copyrights, other intangible property rights, expertise, and software, as well as information processing services"		
	12. Business operations related to the development, sale, rental, maintenance, and management of computing devices, electronic devices, and similar equipment		
	13. Business operations related to project development and sales in connection with information and telecommunication systems		
	14. Business operations related to multimedia research and development		
	15. Manufacturing, processing, sales, and rentals of construction materials, equipment, and machinery		
	16. Business operations related to research, development, manufacturing, sales, rentals, maintenance, management and international trade of living environment equipment		
	17. Worker dispatch services		
	18. Money lending and other nancial services		
	19. All business operations incidental to the aforementioned items		

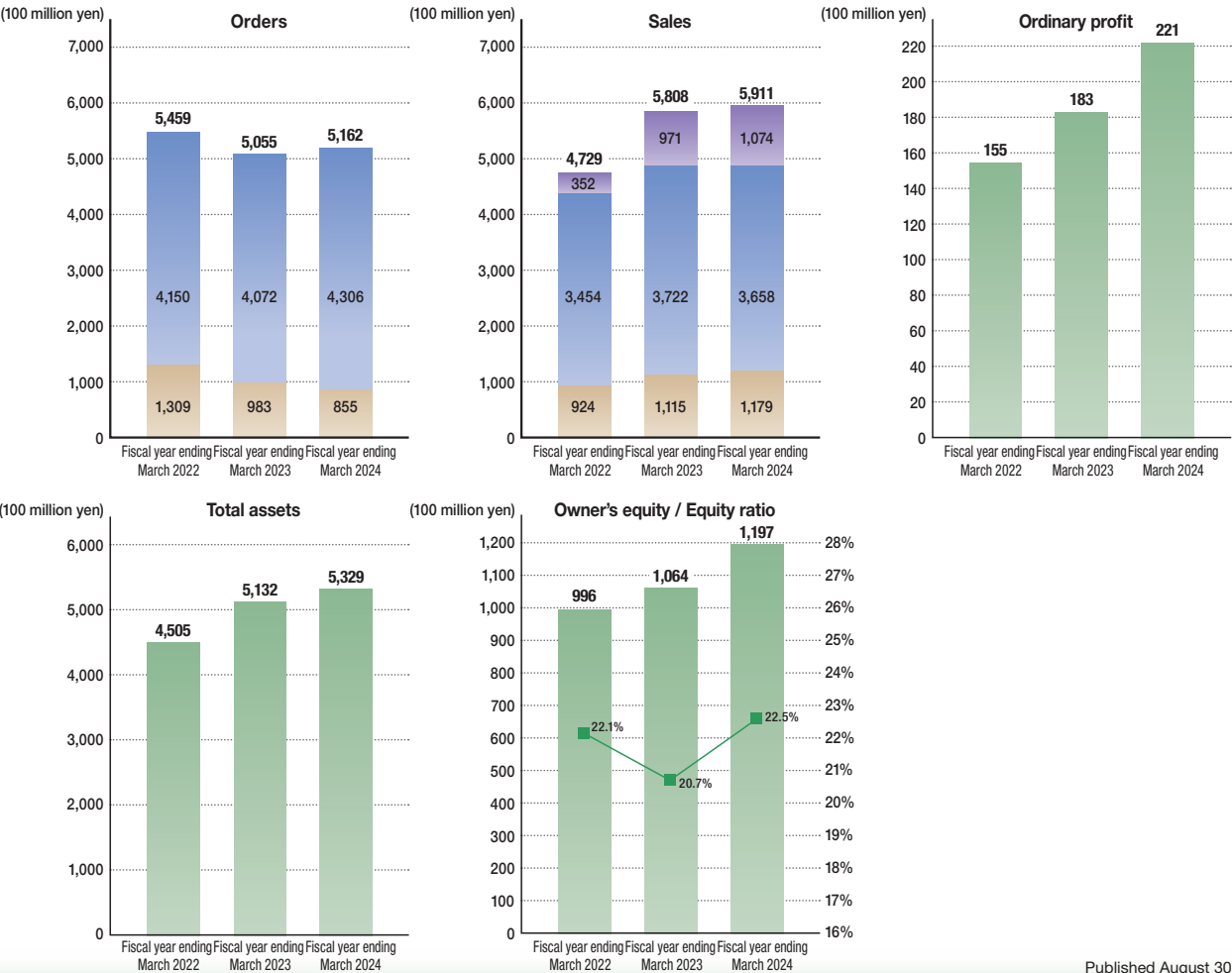
## Directors and officers of Fujita

Representative director	President	Yoji Okumura						
Representative director	Senior managing executive officer	Tatsuya Ide						
Director	Senior managing executive officer	Toru Hirano	Naoki Nishioka	Yukitsuna Yamaguchi				
Director	Executive operating officer	Masahiro Fujii	Satoshi Nanko	Atsushi Yoshida	Michikazu Sora	Seiji Kimishima	Masaaki Shigetomi	Shin Watanabe
Director		Yoshiyuki Murata	Masatoshi Sarashina	Masanori Shiina				
Auditor		Koichiro Takayama	Toyota Fusejima					
Operating officer	Senior executive operating officer	Katsuhide Kida						
	Executive operating officer	Masahiro Okada	Yasuhide Araya	Yoshio Saeki	Akihisa Sato	Masaaki Nakai		
	Senior operating officer	Osamu Moriyoshi	Yoshinori Kumita	Shigeru Shimodaira	Toshiya Takasu	Koichi Kaneko	Hidetoshi Aizono	
	Operating officer	Takayoshi Hirahara	Takeya Okuyama	Hiroshi Shinohara	Keiichi Mizutani	Junichi Higaki	Norio Nakamura	Takero Takiura
		Yuichi Masuyama	Katsumi Maehara	Tsuyoshi Tsuchida	Hiroyuki Kaku	Hidetoshi Hotta	Tokio Takahashi	Tetsuya Otsuki
Motoichi Naito		Shinji Tsuchiya						

■ Organization



Fujita Corporation's business results (■ Civil engineering ■ Construction ■ Development, etc.)



## ■ Branches and offices

<b>Head office</b>	SYD Building, 4-25-2 Sendagaya, Shibuya-ku, Tokyo TEL : 03-3402-1911    FAX : 03-3404-8477		
<b>Hokkaido Branch</b>	5th floor, Yamaguchi Chuo Building, Minami 2-jo Nishi 1-7-8, Chuo-ku, Sapporo-shi TEL : 011-251-6151    FAX : 011-281-2194		
<b>Tohoku Branch</b>	3-7-33 Tsutsujigaoka, Miyagino-ku, Sendai-shi TEL : 022-794-8550    FAX : 022-794-8954  Aomori Office    TEL : 017-734-7397    FAX : 017-775-3488 Morioka Office    TEL : 019-622-4639    FAX : 019-654-6102 Yamagata Office    TEL : 022-794-8559    FAX : 022-794-8954 Fukushima Office    TEL : 024-572-6435    FAX : 024-572-6436		
<b>Tokyo Branch</b>	4-32-22 Nishi-Shinjuku, Shinjuku-ku, Tokyo TEL : 03-5309-2100    FAX : 03-5309-2373 Tama Office    TEL : 042-527-1270    FAX : 042-527-1143 Yamanashi Office    TEL : 055-235-2968    FAX : 055-235-2140		
<b>Chiba Branch</b>	1-15-1 Benten, Chuo-ku, Chiba-shi TEL : 043-253-1911    FAX : 043-253-1441 Tokatsu Office    TEL : 04-7192-6311    FAX : 04-7192-6312		
<b>Kanto Branch</b>	17th floor, Sonic City Building, 1-7-5 Sakuragi-cho, Omiya-ku, Saitama-shi TEL : 048-657-1630    FAX : 048-657-1492  Ibaraki Office    TEL : 029-828-6651    FAX : 029-828-6652 Tochigi Office    TEL : 028-688-7100    FAX : 028-688-7111 Hokuriku Office    TEL : 076-263-7156    FAX : 076-263-0576 Niigata office    TEL : 025-243-1911    FAX : 025-241-2653 Nagano Office    TEL : 026-227-3651    FAX : 026-228-4396 Toyama Office    TEL : 076-432-6400    FAX : 076-442-3306		
<b>Yokohama Branch</b>	Kinko Bldg 5F, 7-3, Kinko-cho, Kanagawa-ku, Yokohama-shi TEL : 045-594-6722    FAX : 045-594-6746  Kawasaki Office    TEL : 044-299-6351    FAX : 044-299-6352 Shounan Office    TEL : 046-373-8564    FAX : 046-373-8572		
<b>Tokyo Civil Engineering Regional Branch</b>	5th floor, 4-32-22 Nishishinjuku, Shinjuku-ku, Tokyo TEL : 03-5309-2694    FAX : 03-5309-2583		
<b>Nagoya Branch</b>	4th floor, Unryu Flex West Building, 2-1-9 Shinsakae, Naka-ku, Nagoya-shi TEL : 052-259-6000    FAX : 052-259-6017  Toyota Office    TEL : 056-585-8615    FAX : 056-585-8616 Shizuoka Office    TEL : 054-287-5175    FAX : 054-287-3570 Fuji Office    TEL : 054-567-3022    FAX : 054-567-3033 Hamamatsu Office    TEL : 053-543-7970    FAX : 054-287-3570 Mie Office    TEL : 059-351-1801    FAX : 059-351-1802		

## ■ Overseas offices

<b>Shanghai Office</b>	TEL : +86-21-6841-5522
<b>Hong Kong Branch</b>	TEL : +852-2311-1398
<b>Philippine Branch</b>	TEL : +63-2-8856-06-21/23
<b>Seoul Branch</b>	TEL : +82-2-757-6547
<b>Hanoi Office</b>	TEL : +84-24-3726-2452/2454
<b>Ho Chi Minh Office</b>	TEL : +84-28-3512-0757
<b>Mexico Branch</b>	TEL : +52-55-5574-3599
<b>Taipei Branch</b>	TEL : +886-2-2541-3600
<b>Dubai Branch</b>	TEL : +971-4-323-7022

<b>India Office</b>	TEL : +91-44-4857-4048
<b>Yangon Branch</b>	TEL : +95-1-373634
<b>Malaysia Branch</b>	TEL : +60-3-2287-6188
<b>Singapore Branch</b>	TEL : +65-6337-3336
<b>Doha Branch</b>	TEL : +974-4476-3463
<b>Kenya Branch</b>	TEL : +254-20-513-8505
<b>Peru Branch</b>	TEL : +51-01-773-6969
<b>Bangladesh Branch</b>	TEL : +880-96-7760-1030

## ■ Overseas Affiliated Company

Fujita Americas, Inc.
Fujita (China) Construction Co., Ltd.
Fujita Philippines Construction and Development, Inc.
Fujita Corporation Vietnam
Fujita Engineering India Pvt., Ltd.
Fujita Integral Mexico S.A. de C.V.
Fujita Corporation (M) Sdn. Bhd.
Fujita Corporation (Thailand) Ltd.

# History

## 1869 onward: Extensive infrastructure development takes place as Japan modernizes

- 1869 » Sentaro Nomura, our first president, establishes Nomura-gumi in Shinjuku (Daiwa Odakyu Construction)
- 1910 » The company's first full-fledged civil engineering construction project is completed (Daiwa Odakyu Construction)



Railway laying project for Seiso Electric Railway

- » Ichiro Fujita and his younger brother Sadaichi start a company together in Hiroshima City (Fujita)

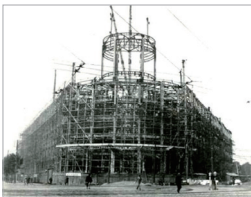


Ichiro Fujita



Sadaichi Fujita

- 1928 » The company receives an order to build a steel frame for the Metropolitan Police Department building, a steel frame structure weighing over 6,000t (Fujita)



Metropolitan Police Department steel frame project

## 1945 onward: Postwar recovery brings a period of high economic growth

- 1945 » World War II ends when atomic bombs are dropped on Hiroshima and Nagasaki



- » The company works on the rebuilding of Hiroshima Red Cross Hospital after the atomic bombing (Fujita)
- » The company works on the rebuilding of Shinjuku after the destruction by air raids (Daiwa Odakyu Construction)

- 1962 » The company utilizes its extensive experience overseas (Fujita)



The company dispatches a South American study group



Japanese booth at Pacific International Trade Fair (Peru)

- 1964 » Tokyo Olympics held



Komazawa Olympic Park Olympic Memorial Tower (Fujita)

- 1968 » Value engineering is introduced for the first time by a Japanese construction company (Fujita)

## 1970 onward: Branching out from construction: Shift to convenient cities and environments

- 1975 » The company completes Nagasaki Airport, the world's first offshore airport (Fujita)



(photo taken 1982)

- 1985 » The company strengthens its urban development business (Fujita)



Hiroshima Alpark



Saitama Industry and Culture Center (Sonic City)

- 1998 » The company carries out quake-proofing of bridge piers to protect them from major earthquakes (Daiwa Odakyu Construction)



Reinforcement of Sakawa River bridge, Tomei Expressway

## 2000 onwards: New technology development opens up a new future in areas such as disaster prevention

- 2011 » The company carries out recovery work around the Tohoku area after the Great East Japan Earthquake



Yamamoto Town, Watari District, Miyagi Prefecture, where the company carried out renewal work (Fujita)

- 2013-2015 » Fujita joins the Daiwa House Group in 2013, following Daiwa Odakyu Construction in 2008

- » Fujita merges with Daiwa Odakyu Construction in 2015

**FUJITA**

**Daiwa House Group**

- 2017 » The company completes Japan's first 60-story condominium complex with proprietary support features including steel panel dampers and ultra-high-strength concrete



The Parkhouse Nishi Shinjuku Tower 60

- 2018 » The company completes Japan's first removal of a concrete dam

- » The company acquires ISO45001, ahead of the rest of the construction industry



Arase Dam, which was demolished

- 2021 » The company completes Daiwa House Group MIRAI KACHI KYOSO Center "Kotokurie". BIM is used throughout all processes for this training facility, from design to construction to maintenance and management of the building.



Daiwa House Group MIRAI KACHI KYOSO Center "Kotokurie"